

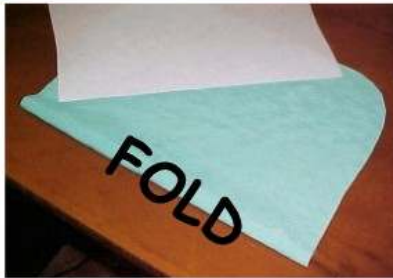
Instructions for Debra's Bag

Making the pockets

You can make pockets on both the front and back panel and even add smaller pockets to the large ones
It is all up to you how many pockets you want
These instructions are for making one pocket.



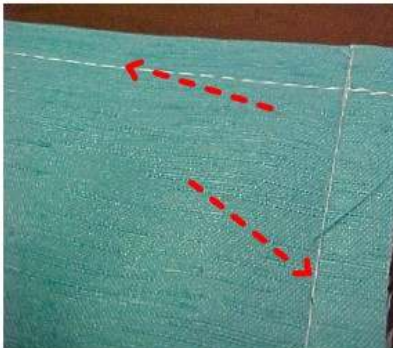
Take the front or back of the bag after sewing all the pieces together, and cut a piece of stabilizer the same size and shape



Fold your fabric or lining and cut the same size and shape as stabilizer

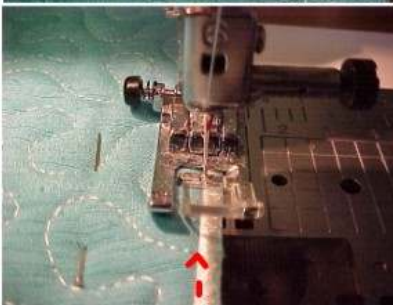


Place the stabilizer inside the folded fabric as shown in the picture



Sew all around with a straight stitch, about 1/2 inch from the edges.

If you want to add smaller pockets to your bag, now is the time to do that.



Place the pocket on the inside of your front or back panel and stitch right next to the satin stitch with a straight stitch. Do not stitch on top of the satin outline.

For any questions please do not hesitate to contact me.

Annatjie van Vuuren
Classic Embroideries
<http://www.clasicembroidery.com>
anvv@clasicembroidery.com